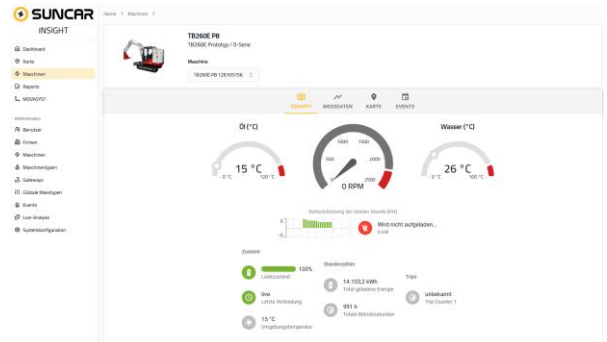


# INSIGHT

## Remote System

With the Remote System **INSIGHT**, you gain a quick insight and overview of your fleet.

The operating data and states can be controlled efficiently and intuitively. The map view provides an overview of the current locations of your machines and vehicles. The connection via mobile network enables live support for problem analysis, troubleshooting and over-the-air updates. This shortens response time and replaces many on-site service calls.



## Equipment

- Intuitive interface for machine and user management including management of third-party companies for access to operating data
- Recording of operating data via mobile network and immediate error notification via e-mail
- Secure VPN access to the machine for software upgrade and parameter adjustments Over The Air (OTA)
- Customized appearance (own company logo)

## Specifications

<b>CAN-Bus</b>	2x 2.0 A/B
<b>Mobile communication</b>	GSM/GPRS 3G/4G, WiFi
<b>System voltage</b>	12 V / 24 V
<b>Ambient temperature</b>	-20 – +60 °C
<b>Current consumption</b>	<100 mA
<b>Protection class</b>	IP67

## Packages

- **GATEWAY:** Easy commissioning at the push of a button, robust Linux-based IoT gateway with pre-processing of operational data, backup battery, full CAN logging to SD card
- **LOGGING:** Machine administration, storage of operating data on INSIGHT server, REST data interface
- **MONITORING:** Graphical display of operating data in the browser, configurable e-mail notifications, live machine cockpit, creation of reports
- **ACCESS:** Worldwide VPN access to the machine via INSIGHT Gateway. Remote access to machine for parameterization via UDS and import of software updates