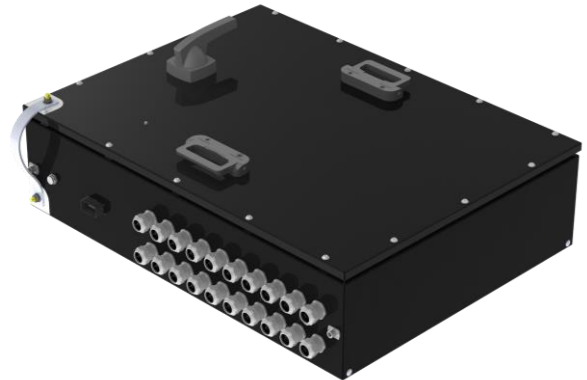


FUSION800L

High voltage distribution unit

With the high voltage distribution system **FUSION**, the main components battery, charger, inverter, motor and optionally the fast-charging system get connected. All inputs and outputs are fused on both sides (positive and negative pole).

Typical applications are electrified machines and vehicles with increased demands on robustness and safety, such as construction machinery, commercial vehicles and municipal vehicles. In addition, we offer specific advice on the use of high-voltage distribution units and for fuse and cable design.



Features

- 1x connection 175 A to 600 A
- 2x connections 175 A to 400 A
- 18x connections 60 A to 150 A
- 8x connections 10 A to 50 A
- Short-circuit bracket
- Potential equalization
- EMC glands
- Pressure compensation element
- Insulation monitor (optional)
- Mainboard (interlock switch, temperature sensor)
- Access for measuring tips with additional safety level

Specifications

System voltage	Up to 800 VDC
Rated current	480 A*
Supply voltage	12 V / 24 V
Fuse protection	Positive and negative pole
System weight	65 kg (fully assembled)
Ambient temperature	-25 – +55 °C
Protection class	IP66**
Dimensions (L x W x H)	804 x 604 x 285 mm

* time- & temperature-dependent

** higher class on request

