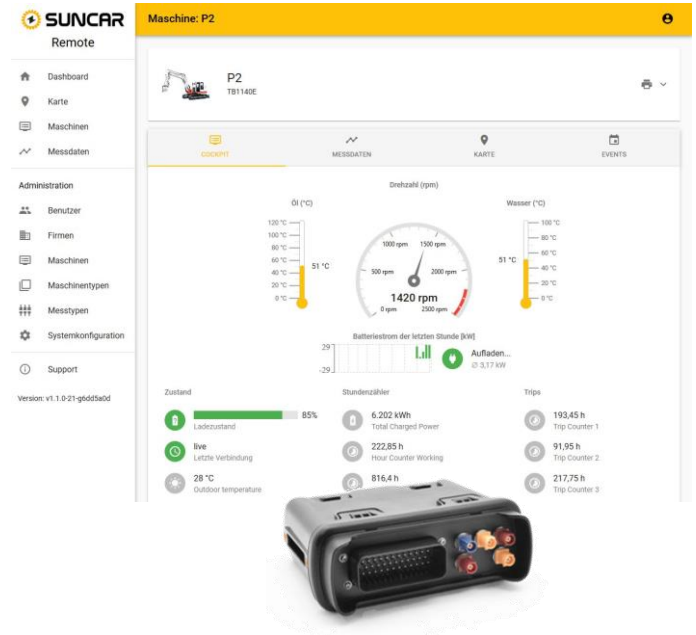


INSIGHT

Remote System

With the Remote System **INSIGHT**, you gain a quick insight and overview of your fleet.

Check operating data, such as state of charge, efficiently and intuitively remote. In the map view you immediately gain an overview of the current GPS positions of the machines or vehicles. Reliable communication via the mobile network enables live support, such as fault analysis and troubleshooting. This shortens the reaction time and avoids unnecessary drives



Features

- Intuitive interface for machine and user management, including third-party management for access to operational data
- Recording of operating data and immediate error notification via email over mobile network
- Secure VPN access to the machine for software upgrade and parameter adjustments Over The Air (OTA)
- Customizable appearance (own company logo)

Package

GATEWAY: Robust Linux-based IoT gateway with pre-processing of operational data, backup battery, full CAN logging to SD card.

LOGGING: Machine administration, storage of operating data on INSIGHT server, REST data interface

MONITORING: Graphical display of operating data in the browser, granular configurable e-mail notifications, live machine cockpit

ACCESS: Worldwide VPN access to the machine via INSIGHT Gateway. Remote access to machine for parameterization via UDS and implementation of software updates.

Specifications

CAN-Bus	2x 2.0 A/B
Mobile communication	GSM/GPRS 3G/4G, WiFi
System voltage	12 V / 24 V
Ambient temperature	-20 – +60 °C
Current consumption	<100 mA
Protection class	IP67