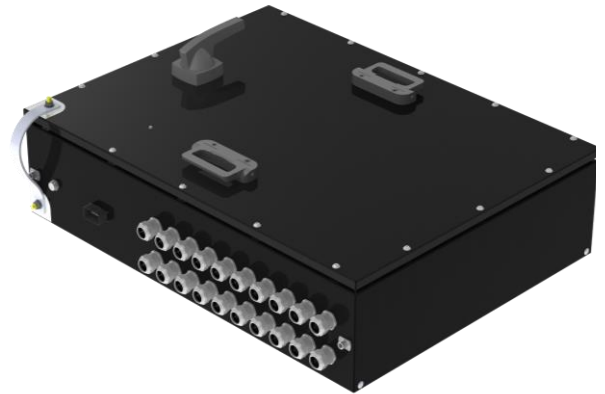


FUSION800L

High voltage distribution unit

With the high voltage distribution system **FUSION**, the main components battery, charger, inverter, motor and optionally the fast-charging system get connected. All inputs and outputs are fused on both sides (positive and negative pole).

Typical applications are electrified machines and vehicles with increased demands regarding robustness and safety, such as construction machinery, commercial and municipal vehicles. In addition, we offer specific consulting for the application of the **FUSION** and for fuse and cable dimensioning.



Features

- 1x connection up to 600A
- 2x connections up to 400 A
- 18x connections up to 150 A
- 8x connections up to 50 A
- Mainboard (interlock switch, temperature sensor)
- EMC glands
- Pressure compensation element
- Short-circuit bracket
- Access for measuring tips with additional safety cover
- Insulation monitor (optionally available)

Specifications

System voltage	Up to 800 VDC
Rated current	480 A
Supply voltage	12 V / 24 V
Fuse protection	Positive and negative pole
System weight	65 kg (fully assembled)
Ambient temperature	-25 – +55 °C
Protection class	IP66*

* higher class on request

